

## Dream Report

The leader in industrial reporting technology

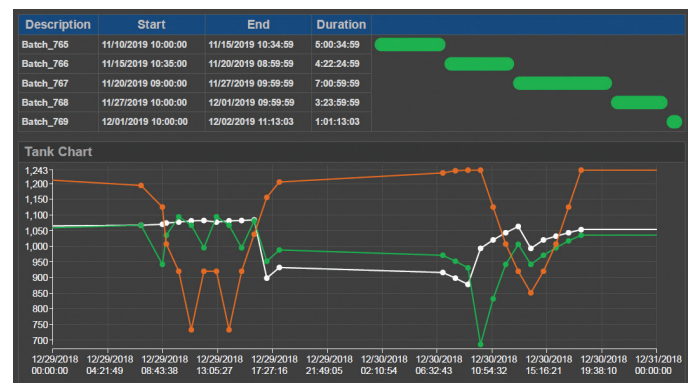
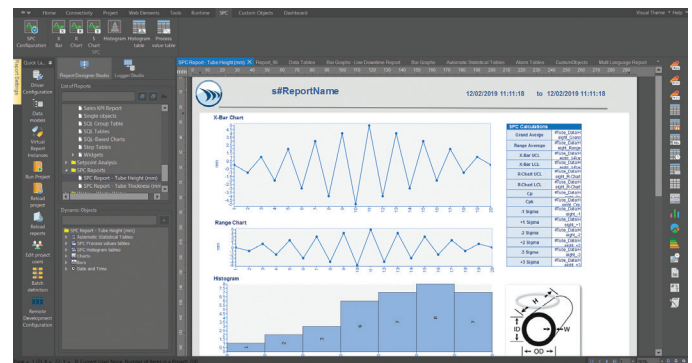
### Dream Report version 5.0 R2

#### User friendly reporting software for automation

Dream Report 5.0 R2 changes the game for industrial reports in every market and every application. Delivering many more valuable features, Dream Report 5.0 R2 now extends integration with AVEVA software products. It also features a new centralized management tool for configuration and management of visualization attributes, time definitions, and document settings.

#### New features

- Centralized advanced visualization manager and time definition manager
- Custom objects builder – Gantt chart, circular chart and other object examples
- Cost calculator for utilities billing and energy accounting
- New report settings panel
- XML report output format
- MQTT real-time driver
- On-line electronic signature
- OPC DA reporting data server
- System driver for diagnostic analytics
- Tested with Windows Embedded 7 (SP-1), 8, 10, 10 (IOT)
- API toolkit for connector plug-in development
- Server 2019 support



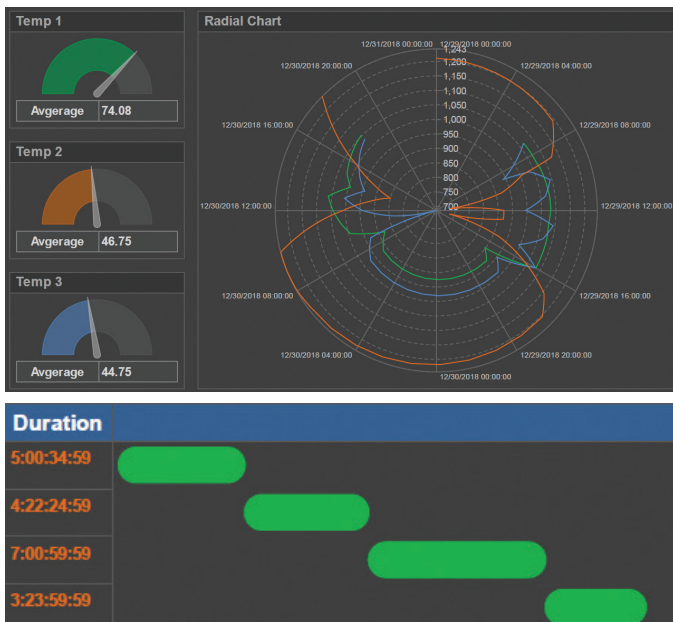
Gantt Chart display object showing sequence of batches

#### Centralized advanced visualization and time definitions

Create and manage visualization conditions and time schedules in one place and reference them throughout your report objects or project. Being able to make changes in one place and referencing conditions makes system-wide updates a quick, straightforward process while significantly reducing development time and errors.

#### Custom display objects

A new object builder lets users expand the Dream Report graphics set with their own display objects. New objects are easily applied by anyone, through standardized configuration menus.



Custom displays objects

## MQTT driver

In the Internet of Things era, the most common protocols for data access are OPC UA and MQTT with JSON Messaging. Dream Report 5.0 R2 now supports both protocols to access IoT, IIoT, and Industry 4.0 device data with a new configurable MQTT driver as well as a OPC UA driver.

This dialog box allows for defining visualization conditions. It includes fields for Name, Description, and Settings (From, To, Display text). A 'Display Style' section offers font and background color options. A table lists various conditions (Avc1 to Avc14) with their descriptions. Buttons for 'OK', 'Cancel', 'Export to XML', and 'Import from XML' are at the bottom.

Name	Description
Avc1	
Machine States	
Avc3	
Avc4	
Avc5	
Avc6	
Avc7	
Avc8	
Avc9	
Avc10	
Avc11	
Avc12	
Avc13	
Avc14	

This dialog box is used to define time periods. It includes a list of time periods (3rd Shift, 1st Shift, 2nd Shift, MTD, YTD) and a 'Define time period' section with options for Absolute or relative period definition. It includes fields for Start and End of report period. Buttons for 'OK', 'Cancel', 'Export to XML', and 'Import from XML' are at the bottom.

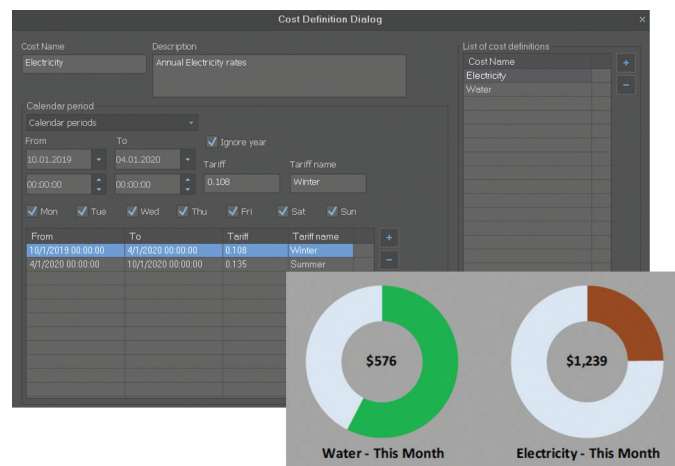
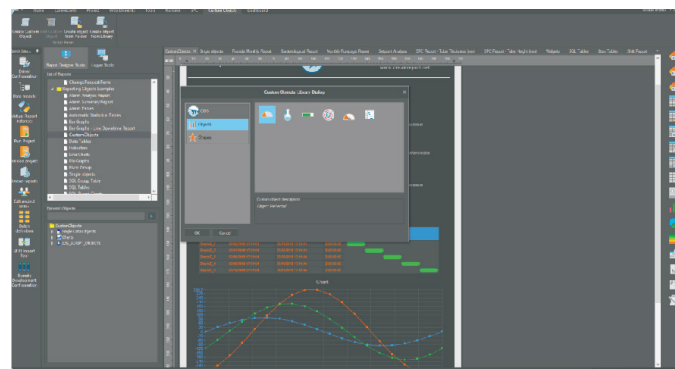
Centralized Advanced Visualization and Time Definitions

## XML Report output format

XML (Extensible Markup Language) is an ideal solution for data transfer, providing both a human and machine readable format. Dream Report can now automatically generate reports in XML format for integration with other systems, typically automation and regulatory related.

## Cost Calculator

Automated cost calculations require use of schedules and variables to determine the proper costs to use at any moment in time. Dream Report now supports a very powerful cost calculation engine, enabling it to be an ideal solution for any billing or cost allocation application.



Rate and tariff calculations associated with meter readings

For a detailed list of enhancements and the release notes, please visit: [www.DreamReport.com](http://www.DreamReport.com)

